

ULUWATU BEACH HOUSE



www.ulubeachhouse.com

Luxury private villa & bungalows - Features 3 bedrooms, kitchen, spacious living & entertainment areas, private pool, large garden, maid service & high speed wifi. 5-minute walk to Uluwatu beach & surf! Available as entire property (sleeps 6) or individual bungalows (each sleeps 2).

A beautiful designer home, Uluwatu Beach House is a collection of thatched-roof bungalows set in a spacious tropical garden. Only a short walk from Uluwatu's world-famous waves, it is the perfect place to experience South Bali's Bukit Peninsula, known for its limestone cliffs, numerous breaks, hidden beaches and friendly surf community.

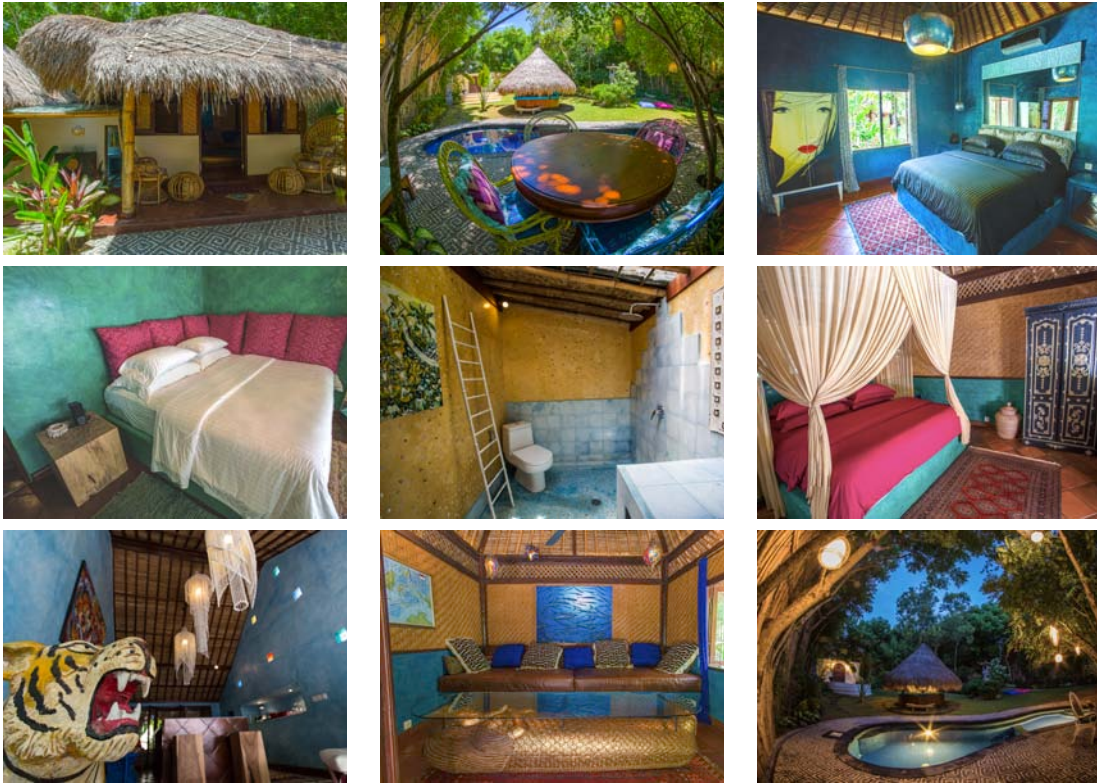
Uluwatu Beach House sleeps up to 6 guests, it comprises of 3 bedroom bungalows with AC, double beds, King Koil mattress and quality linens. 3 bathrooms (two ensuite) hot water showers, towels and toiletries. The property also features a fully equipped kitchen, a cozy Moroccan-themed TV lounge, spacious outdoor living and entertainment areas, a large garden, BBQ pit, private swimming pool, gazebo, surfboard racks, laundry room, daily maid service and high speed wifi.

2016-2017 RATES			
Pricing* dated 15 March 2016			
ENTIRE PROPERTY - 3 BUNGALOWS WITH DOUBLE BEDS, SLEEPS 6			
Standard Rates: All other dates		High Season: 15 June - 15 Sept, 15 Dec - 15 Jan	
Nightly - min 2 nights	US\$200	Nightly - min 2 nights	US\$250
Weekly - 7+ nights	US\$1225 (\$175/N)	Weekly - 7+ nights	US\$1575 (\$225/N)
Monthly - US\$3500 (28+ nights \$120/N)			
1 BUNGALOW ONLY - DOUBLE BED, SLEEPS 2 (shared property)			
Standard Rates: All other dates		High Season: 15 June - 15 Sept, 15 Dec - 15 Jan	
Nightly - min 2 nights	US\$70	Nightly - min 2 nights	US\$85
Weekly - 7+ nights	US\$425 (\$60/N)	Weekly - 7+ nights	US\$525 (\$75/N)
<p><i>For Direct Bookings: all pricing is quoted in USD and inclusive of 5% service charge and government tax. Bookings are subject to a minimum 2-nights stay. Uluwatu Beach House takes direct bookings and walk-ins with no additional fees. Payments processed by PayPal and USD cash USD. Indonesian Rupiah cash payments are subject to prevailing currency exchange rates. 25% upfront deposit is required to secure the booking, and balance payment due 30 days prior to check-in. If booking within 30 days prior to check-in then 100% upfront payment is required. Cancellation policy: Written cancellation required. 30 days+ prior to check-in 100% refund. 30-15 days prior to check-in 50% refund. 14 days prior to check-in no refund applicable. Rates are subject to change until reservation is confirmed.</i></p> <p><i>Online booking websites: Uluwatu Beach House is listed on airbnb, TripAdvisor & booking.com Please note that certain online booking websites charge additional guest booking fees to our published rate, and the booking is subject to the respective payment terms and cancellation policy through their website.</i></p>			
CONTACT US FOR MORE INFORMATION, LONG STAY & SURF INDUSTRY SPECIALS RATES!			

Follow us • [instagram/uluwatubeachhouse](https://www.instagram.com/uluwatubeachhouse) • [facebook/uluwatubeachhouse](https://www.facebook.com/uluwatubeachhouse)

Jalan Pantai Suluban, Uluwatu, Pecatu, Bali, 80364, Indonesia
 ☎ +62 87761680760 ✉ uluwatubeachhouse@gmail.com
www.ulubeachhouse.com

ULUWATU BEACH HOUSE



www.ulubeachhouse.com

Luxury private villa & bungalows - Features 3 bedrooms, kitchen, spacious living & entertainment areas, private pool, large garden, maid service & high speed wifi. 5-minute walk to Uluwatu beach & surf! Available as entire property (sleeps 6) or individual bungalows (each sleeps 2).

Uluwatu Beach House reflects tropical-coastal style inspired by Bali-living. The charm of rustic bungalows comes with five star amenities and luxury finishes. Featuring custom designed interiors, natural building materials and seamless indoor-outdoor living spaces, the unique property offers a secluded oasis in one of the best locations in Uluwatu.

A self-catering property, the property has a fully equipped kitchen with modern appliances. Breakfast service is not included. Complimentary drinking water, tea & coffee.

Mini bar & provisions service. Basic supplies and breakfast baskets can be ordered in advance through our provisions service. Please refer to the service menu for details.

Local Dining. Land's End Café is only 30 meters from the front gate. It is a popular spot for healthy breakfasts, lunch, coffee & smoothies. Located next door is Ulu Resto, serving breakfast, lunch & dinner. Their close proximity and home delivery service, is very convenient for guests staying at Uluwatu Beach House. The wider area of Uluwatu-Padang Padang-Bingin offers numerous cafes, bars and restaurants serving international and local fare.

Local Knowledge. As long-time residents, we are here share our knowledge of the area and surf, make recommendations and assist you with booking external services such as transport, taxi, car and scooter hire, in-villa massages or classes at the near by Morning Light and Yoga Searcher Bali yoga studios.

Uluwatu is best known for its world-class surf. The property is a 5-minute walk to Uluwatu's South-side entrance, where you can walk down to the beach, the famous 'cave' and out to the surf. Other famous breaks of the Bukit Peninsular can be easily accessed along the coastline by scooter/car. Padang Padang, Impossible, Bingin and Nyang Nyang are 10-minutes away. Dreamland, Balangan, Green Bowl, and then Nusa Dua with its associated breaks, range between a 15-45 minute drive away. Surf reports and spot guides can be found on www.magicseaweed.com